

End to End Wireless Encryption Network Creation Instructions: Windows XP

- You must be logged into your Administer account to perform these actions.
- The Dell Wireless Configuration Utility must be disabled if it is present to allow windows to manage wireless connections.

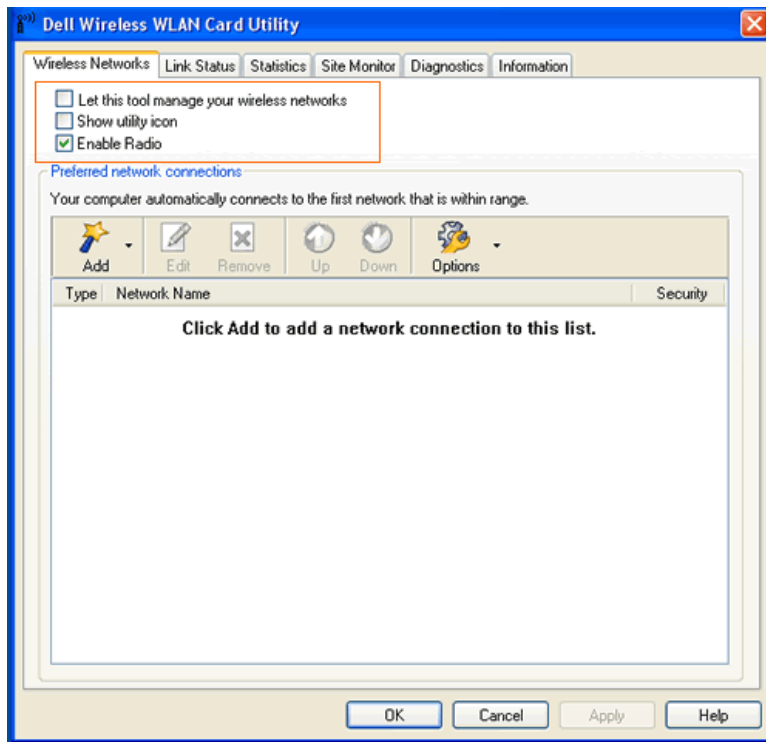
Disable the Dell Wireless Configuration Utility:

1. Open the Control Panel.
2. Open the Wireless Configuration Utility.



3. Uncheck two button at the top of the page:

1. Let this tool manage your wireless networks
2. Show Utility Icon.



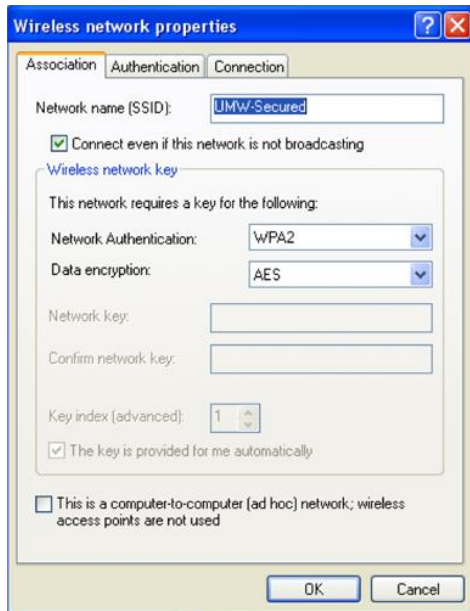
4. Click OK.

5. Continue with the XP configuration instructions.

Create the Wireless Connection:

1. Click Start.
2. Open the Control Panel.
3. Under the Network & Internet Connections Heading, click Network Connections (In Classic view, Double Click the Network Connections Icon).
4. Right Click the Wireless Network Connection and select View Available Wireless Networks from the Drop Down Menu.
5. Click Change Advanced Settings under Related Tasks on the left.

On the Association Tab:



6. Select the Wireless Networks tab at the top of the Properties Page.
7. Click Add.
8. In the Network Name (SSID) field, type UMW-Secured.
9. Check the Connect even if the network is not broadcasting check box and click the Authentication tab at the top of the properties page.
10. Select WPA2 from the Network Authentication Drop Down List – Data Encryption will Default to AES.
11. Select AES in the Data Encryption drop down menu.

On the Authentication Tab:



12. Select Protected EAP (PEAP) from the EAP type drop down list.
13. Uncheck the Authenticate as computer when computer information is available check box.
14. Click the Properties Button.
15. Uncheck the Validate server certificate check box at the top of the EAP Properties Window.
16. Click the Configure Button.
17. Uncheck the Automatically use my Windows logon name and password (and domain if any) check box.
18. Click OK in each window (4 times).
19. Click the Wireless Network Connection bubble when it pops up.
20. Input your username, password, and domain (UMW) and then click OK.
21. The Clean Access client will then pop up normally..
22. On subsequent logons the connection will establish automatically.

Need additional help:

Instructional videos are available for Windows 7 and XP online, visit:

http://www.umw.edu/technology/network/nonresidential/wireless/connecting_to_secured_network/default.php

Call the IT Help Desk at 654-2255 or stop by with your machine in the basement of GW Hall.