

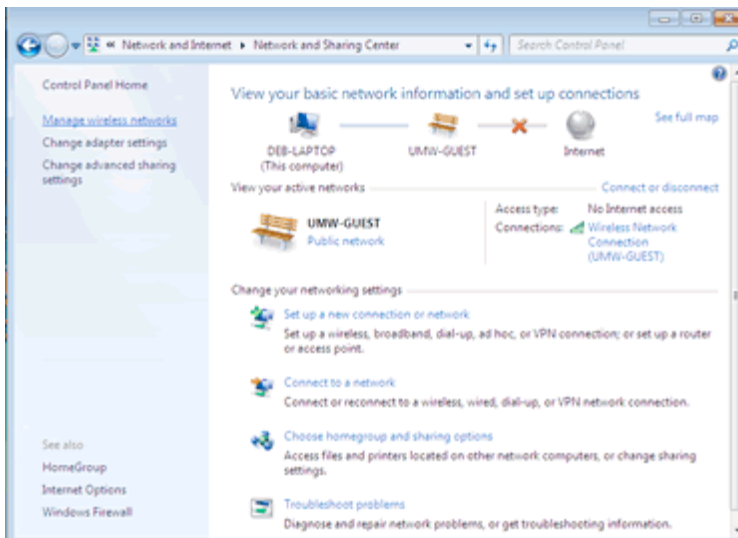
CONNECTING TO THE SECURED NETWORK – Vista\Windows 7

Printable instructions (PDF)

- 1) Click the Start menu.
- 2) Open the Control Panel.
- 3) Under the “Network and Internet” heading, click “View Network Status and Tasks”.

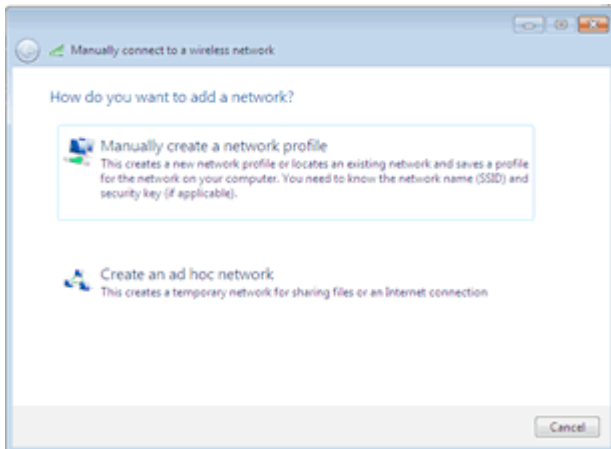


- 4) Click “Manage Wireless Networks” on the left hand pane.

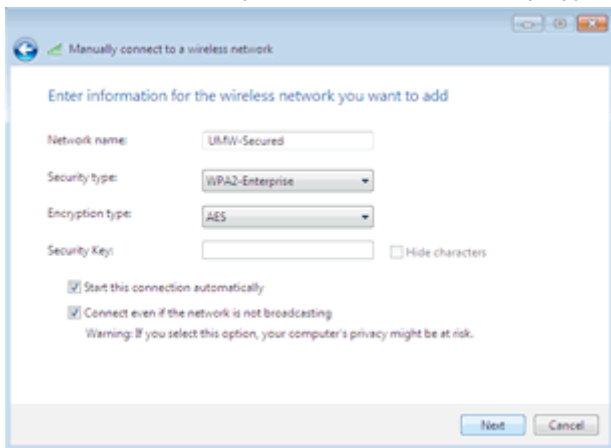


- 5) Click “Add”.

- 6) Select “Manually Create a Network Profile”.

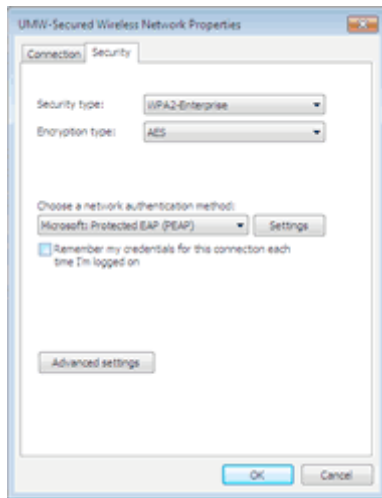


- 7) In the “Network Name” field, type “UMW-Secured”.
- 8) Select “WPA2-Enterprise” from the “Security Type” drop down box.

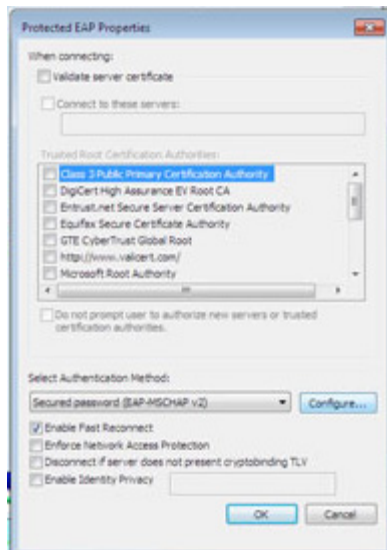


- 9) Check the “Connect even if the network is not broadcasting” check box, then click “Next” and “Close”. You should now see the UMW-Secured network in the Wireless Network Connections Window.
- 10) Double click the UMW-Secured connection.
- 11) Select the Security tab at the top of the properties window.
- 12) Un-check the “Remember my credentials for this connection each time I’m logged in” check box.

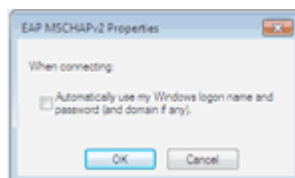
13) Click the “Settings” button.



14) Uncheck the “Validate server certificate” check box at the top of the window, then click the “Configure” Button.



15) Uncheck the “Automatically use my Windows logon name and password (and domain if any)” check box and click “OK”.



16) Click “OK” again at the bottom of each of the two open Properties Windows and close the Wireless Network Connections window.

17) A message should pop up telling you that additional information is required to log in to UMW-Secured. Click the message- a Network Authentication Box should pop up.

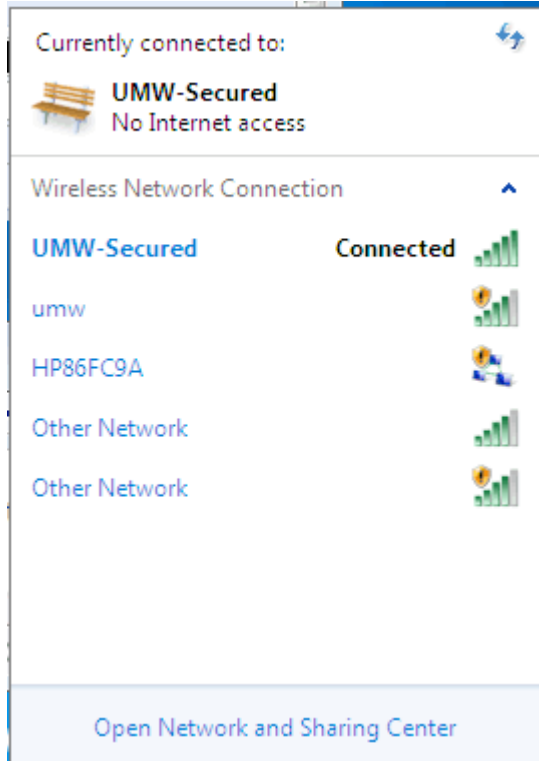
18) Input your domain credentials – EagleNet username and password and click “OK”.

19) The Clean Access Client should then pop up. Log in as you normally would.

20) You are now connected to the Secured Wireless!

When you log in with your wireless card enabled on campus subsequently:

- 1) You will need to click the wireless icon on your lower right tool bar to see your available wireless networks.
- 2) Right click UMW-Secured and hit Connect.



- 3) When the connection is established, a pop up advises that additional information is required to log in to UMW-Secured. Click the pop up and log in. (See step 8 above). The Clean Access client will then pop up normally.

NEED MORE HELP?

- Watch the [Windows 7 Secure wireless video tutorial](#) (UMW ID and password required)
- Call the [IT Help Desk](#) at 540-654-2255